



Collaborative Model between the Basque Country and its local authorities on SEAP issues

Natalia Díaz de Arcaya

Brussels, 24th January 2012



Context:

EVE's MISSION & ENNEREG PROJECT

Context: EVE 's MISSION



EVE is the Basque Government's energy agency. Its mission is to:

- 1 • Propose energy strategies for the Basque Country, using criteria of supply security, cost competitiveness and sustainability.
- Take part in developing these strategies and contribute to meet their targets.

MISSION

+  ENERGY SAVING and SUPPLYING THROUGH RENEWABLE ENERGIES
IN OUR MUNICIPALITIES (20-20-20)

Context: EVE 's MISSION



EVE is the Basque Government's energy agency. Its mission is to:

- Propose energy strategies for the Basque Country, using criteria of supply security, cost competitiveness and sustainability.
- Take part in developing these strategies and contribute to meet their targets.

MISSION

**ENERGY SAVING and SUPPLYING THROUGH RENEWABLE ENERGIES
IN OUR MUNICIPALITIES (20-20-20)**



COVENANT OF MAYORS:

- By their commitment, Covenant signatories aim to meet and exceed the European Union 20% CO2 reduction objective by 2020. (20-20-20)

**ENERGY SAVING and SUPPLYING THROUGH RENEWABLE ENERGIES
IN OUR MUNICIPALITIES (20-20-20)**

= EVE CoM Coordinator

Context: ENNEREG PROJECT

Regions paving the way for a Sustainable Energy Europe

Project supported by the **Intelligent Energy - Europe** programme
1 May 2010 - 30 April 2013

ENNEREG aims to develop SEAPs for 12 regions in conjunction with implementation of specific sustainable energy measures.



Covenant of Mayors

- Basque Covenant Coordinator
- Basque Covenant Signatories



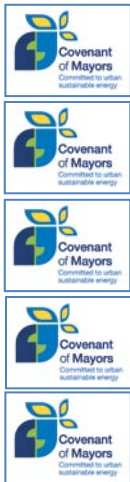
www.regions2020.eu

Context: EVE 's MISSION



Basque Country	
Area	7,240 km ²
Population	2.1 million people
Municipalities	251 6 over 50,000 inhabitants 59 over 5,000 106 are less than 1,000
Provinces	Araba, Bizkaia and Gipuzkoa



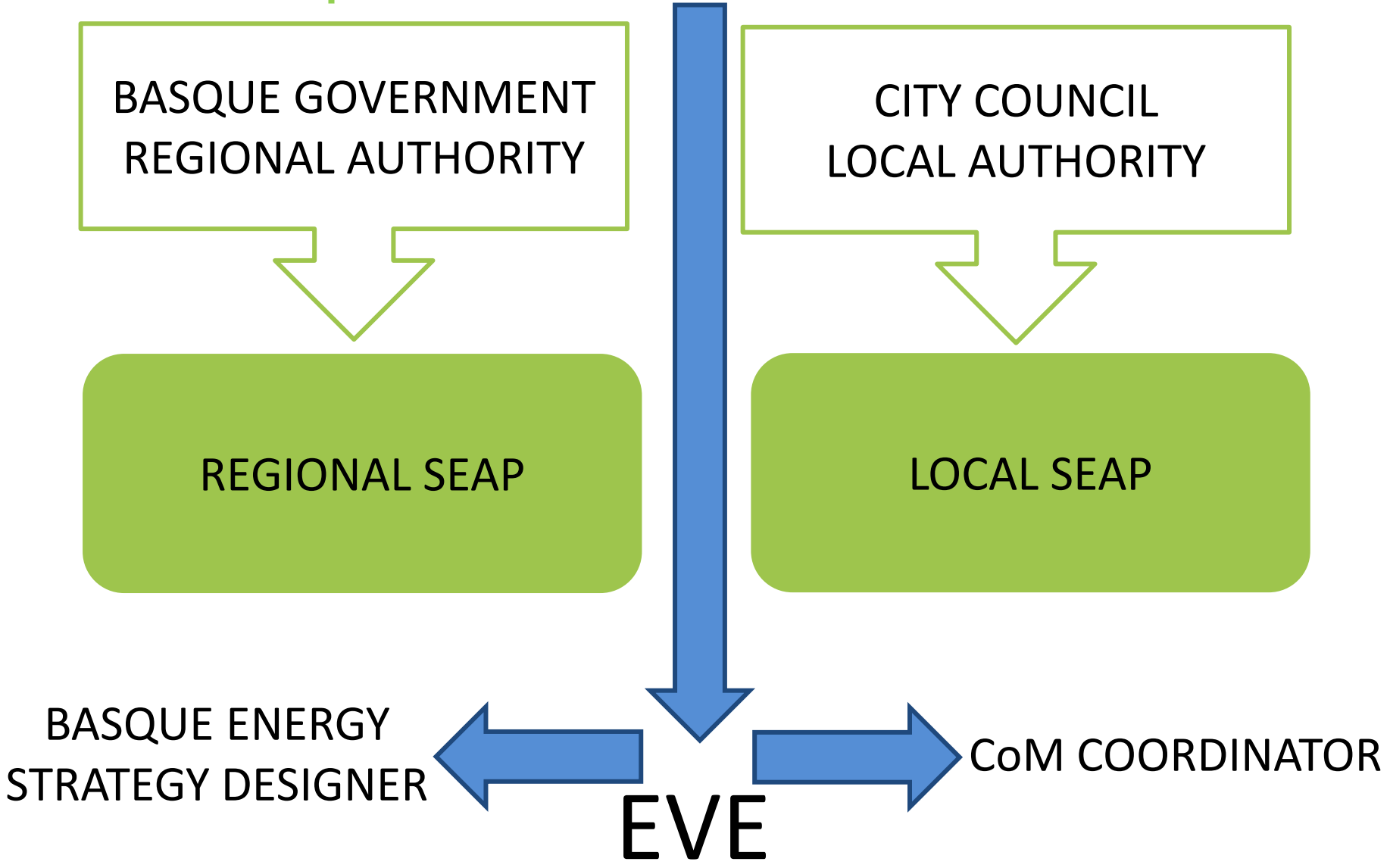


Model of cooperation:

EVE AS COVENANT COORDINATOR

Model of cooperation:

CoM coordinator : EVE



Model of cooperation:

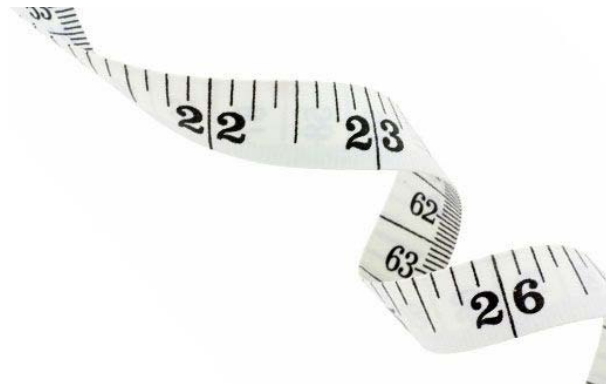
CoM coordinator : EVE



EVE's way of working is based on:

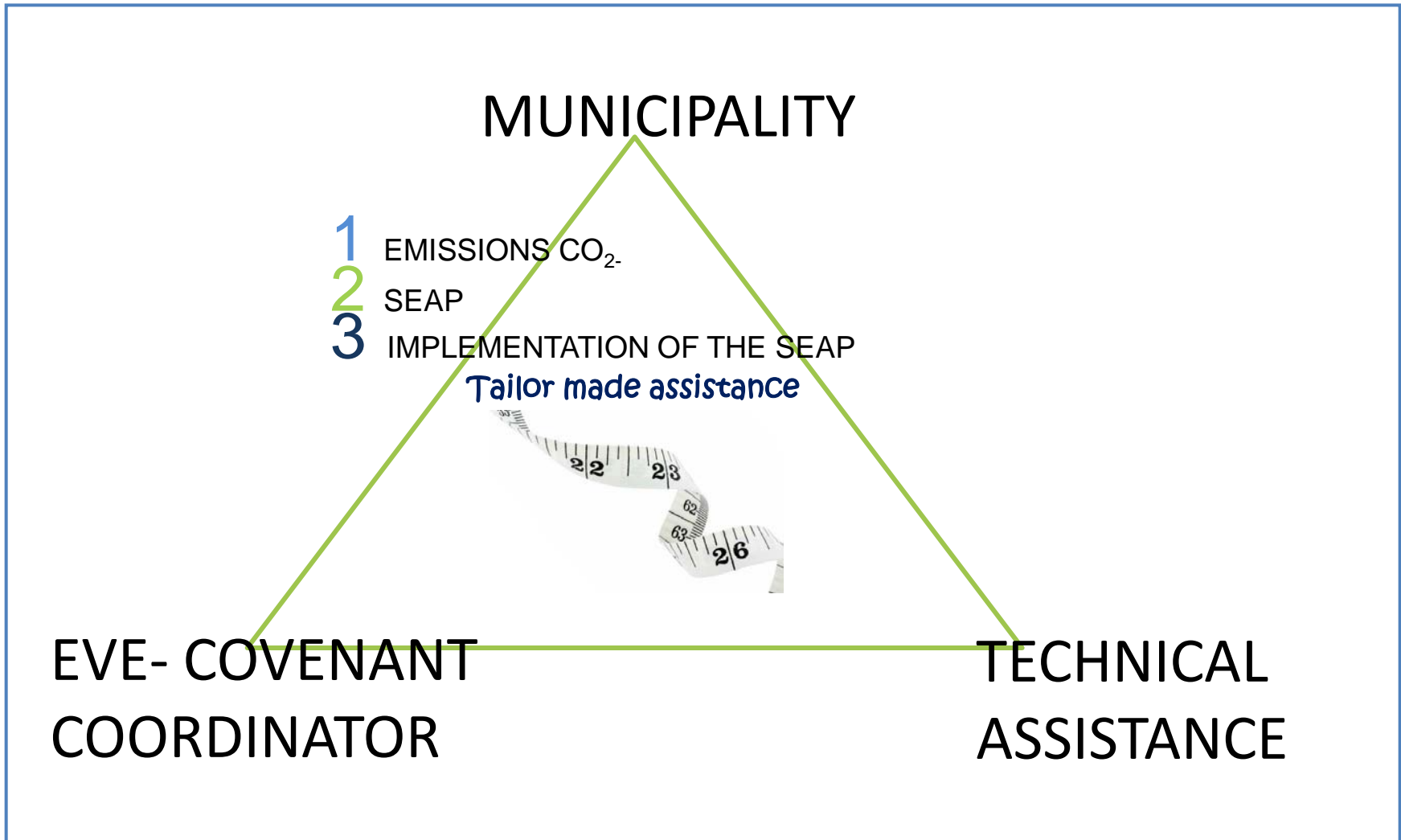
- TAILOR MADE ASSISTANCE
- PROGRESSIVE ADHESION

Tailor made assistance



Model of cooperation:

CoM coordinator : EVE



Model of cooperation:

CoM coordinator : EVE



ANALYSIS

Previous analysis in the town hall on the suitability to join Covenant of Mayors

1 ANALYSIS



OFFICIAL SIGNING OF THE COVENANT OF MAYORS

The Mayor, on behalf of the City Hall, signs the adherence form that is sent by email to the Covenant of Mayors Office

2 SIGNATURE



ELABORATION OF SUSTAINABLE ENERGY ACTION PLAN

Identification of actions to be undertaken with technical, economic and investment analysis.

3 SEAP



IMPLEMENTATION OF THE SEAP

Implement the necessary actions to save energy and implement renewable energies

4 IMPLEMENTATION OF THE SEAP

Model of cooperation:

CoM coordinator : EVE



ANALYSIS

Previous analysis in the town hall on the suitability to join Covenant of Mayors

1 ANALYSIS



OFFICIAL SIGNING OF THE COVENANT OF MAYORS

The Mayor, on behalf of the City Hall, signs the adherence form that is sent by email to the Covenant of Mayors Office

2 SIGNATURE



ELABORATION OF SUSTAINABLE ENERGY ACTION PLAN

Identification of actions to be undertaken with technical, economic and investment analysis.

3 SEAP



IMPLEMENTATION OF THE SEAP

Implement the necessary actions to save energy and implement renewable energies

4 IMPLEMENTATION OF THE SEAP

Basque way of working

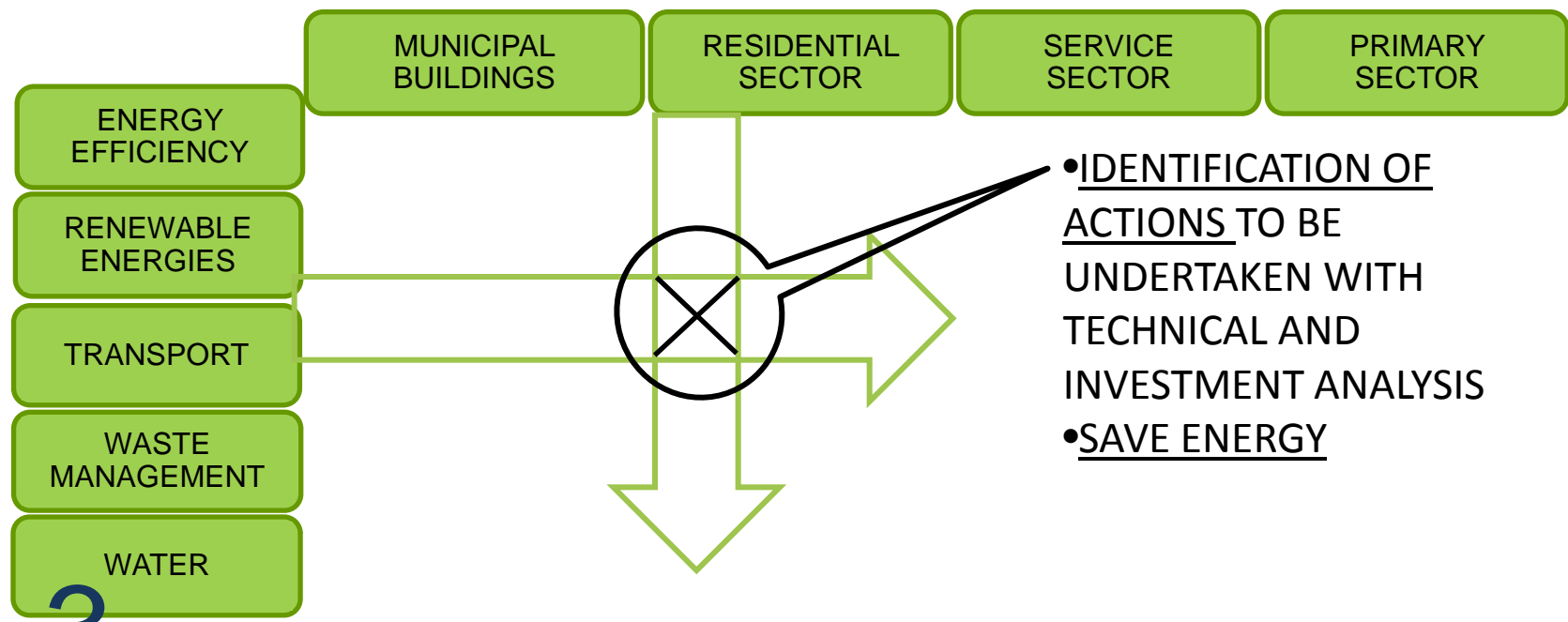
CoM coordinator : EVE



ELABORATION OF THE SUSTAINABLE ENERGY ACTION PLAN

1 EMISSIONS CO₂

2 ENERGY ACTION PLAN SEAP:



- IDENTIFICATION OF ACTIONS TO BE UNDERTAKEN WITH TECHNICAL AND INVESTMENT ANALYSIS
- SAVE ENERGY

3 IMPLEMENTATION OF THE SEAP

Model of cooperation:

CoM coordinator : EVE



ANALYSIS

Previous analysis in the town hall on the suitability to join Covenant of Mayors

1 ANALYSIS



OFFICIAL SIGNING OF THE COVENANT OF MAYORS

The Mayor, on behalf of the City Hall, signs the adherence form that is sent by email to the Covenant of Mayors Office

2 SIGNATURE



ELABORATION OF SUSTAINABLE ENERGY ACTION PLAN

Identification of actions to be undertaken with technical, economic and investment analysis.

3 SEAP



IMPLEMENTATION OF THE SEAP

Implement the necessary actions to save energy and implement renewable energies

4 IMPLEMENTATION OF THE SEAP

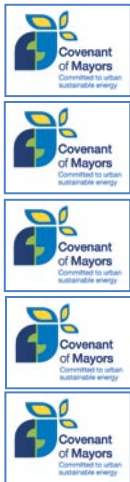
Model of cooperation:

CoM coordinator : EVE



IMPLEMENTATION OF THE SEAP:

- GOVERNANCE **Who?:**
 1. LEADER: mayor
 2. BOARD composed of politicians, technicians and EVE
 3. DECISION MAKER
- TECHICAL WORK **What?:**
 1. LEADER: technicians
 2. PRIORITIES
- MONEY **€?:**
 1. SUBSIDY
 2. FINANCIAL SUPPORT: BANKS, FUNDS,...
 3. OTHERS: PPP,ELENA,JESSICA.....WHATEVER IMAGINE



Model of cooperation:

BASQUE SIGNATORIES

Model of cooperation: Basque Covenant Signatories

1. Donostia–San Sebastián
2. Vitoria-Gasteiz
3. Bilbao More than 50,000 inhabs
4. Irun
5. Oñati
6. Basauri
7. Tolosa
8. Portugalete
9. Hondarribia 10,000-50,000 inhabs
10. Areatza
11. Abanto
12. Balmaseda
13. Amezketza
14. Usurbil Less than 10,000 inhabs

**46% OF THE
POPULATION
INVOLVED**





Model of cooperation:

VITORIA-GASTEIZ Green Capital 2012



Model of cooperation:

CONCLUSIONS

Basque way of working

CoM coordinator : EVE

1. EVE IS THE DESIGNER OF BASQUE ENERGY STRATEGY
2. EVE AS COVENANT COORDINATOR SUPPORTS MUNICIPALITIES:
 - ADMINISTRATIVE SUPPORT
 - TECHNICAL SUPPORT
 - SUBSIDIES
 - LOOKING FOR FINANCIAL SUPPORT
3. 14 SIGNATORIES (46% POPULATION INVOLVED)
4. VITORIA-GASTEIZ GREEN CAPITAL 2012

Tailor made assistance



**SAVE ENERGY AND IMPLEMENT RENEWABLE ENERGIES IN
BASQUE MUNICIPALITIES THANKS TO CoM**

**Eskerrik asko
Muchas gracias
Thank you very much**

**Collaborative Model between
the Basque Country and
its local authorities on
SEAP issues**

Natalia Díaz de Arcaya

Brussels, 24th January 2012